



**KAMLESH
STEEL INDIA**



www.kamleshsteels.com



Overview

Page Details

03

About Us

04

Our Believe

05

Product Pages

15

Contact us

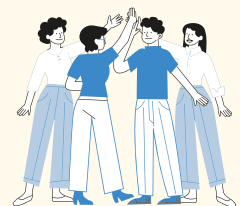
KOI
KOI

About Us

- At KAMLESH STEEL INDIA, we have established ourselves as a trusted name in the steel trading industry, with a commitment to providing high-quality steel products and exceptional customer service. Our expertise spans across various sectors, including construction, manufacturing, automotive, and infrastructure, allowing us to meet the diverse needs of our clients.
- With years of experience in the market, we have built strong relationships with leading steel manufacturers and suppliers globally. This ensures that we offer a wide range of steel products, including hot-rolled and cold-rolled coils, sheets, plates, beams, pipes, and more, all adhering to the highest industry standards.

OUR TEAM

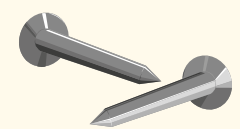
Our dedicated team of professionals is passionate about delivering tailored solutions to meet the unique requirements of each project. Whether you need bulk quantities for large-scale projects or specific grades for specialized applications, we have the capability and flexibility to deliver on time and within budget.



Professional
Specialist



Brilliant
Ideas



High Quality
Products



24x7
Helpline

KSI

Our Believe

- At Kamlesh Steel India, we believe in the power of partnership. We work closely with our clients to understand their goals and challenges, providing expert advice and support at every stage of the process. Our mission is to be more than just a supplier—we strive to be a reliable partner who adds value to your business.
- We are committed to sustainability and responsible sourcing. Our operations are aligned with industry best practices, and we continuously seek ways to reduce our environmental impact while ensuring the highest quality of our products



KSI

OUR PRODUCT RANGE

STEEL PIPES & TUBES

Stainless Steel:

ASTM-A31TP202/304/304H/316/316L/317/317L/321/310/347/904L etc.

Carbon Steel:

***ASTM A53 GR. B/ A106 GR. B/ API SL GRADE B/ API SL GR.X42/46/52/56/ 60/65/70/
Low Temperature,***

Carbon Steel: A333 GR. 3/ GR. 6 etc.

Alloy Steel: ASTM A335 GR. P1/P5/P9/P11/P22/ P91 etc.

***Nickel Alloys: Monel, Nickel, Inconel, Hastalloy, Titanium, Tantalum, Bismuth,
Aluminium, High Speed Steel, 904L, Alloy 20, etc.***

Duplex & Super Duplex Steel: UNS S31803, UNS S32750, UNS S32760, etc.

Non-Ferrous Metal: Copper, Brass, Bronze, Zinc, Lead etc.

***Types: Round, Square, Rectangular. Size: Upto 24" NB. (Seamless & Welded)
Wall Thickness: Sch. 5S to Sch. XXS***



FLANGES

STAINLESS STEEL & CARBON STEEL FLANGES (PLATE / FORGED)

STAINLESS STEEL & CARBON STEEL FLANGES (PLATE / FORGED)

For Flanges, **Kamlesh Steels** is your number one source. We are Supplier of **S.S. Flanges**, **C.S. Flanges** and backing / Lap joint Flanges. Our pipe flanges come in a wide selection of dimensions and specification.

If you require Flanges, contact us and one of our representatives will be happy to help you order just what you need. We are also available to answer questions you may have about our flanges or any of our other products.

Product Range: The following table represents size range, product standards and material grades of Flanges.

- **Stainless Steel: ASTM A182**
F304/304L/304H/316/316L/317/317L/321/310/347/904L etc.
- **Carbon Steel: ASTM A105/A694/F42/46/52/56/60/65/70/A350 LF3/A350 LF2, etc.**
- **Alloy Steel: ASTM A182 F1/F5/F9/F11/F22/F91 etc. Duplex & Super Duplex Steel: UNS S31803, UNS S32750, UNS S32760, 904L, Alloy20, etc.**
- **Other Alloys: Monel, Nickel, Inconel, Hastalloy, Titanium, Tantalum, Bismuth, Aluminium, High Speed Steel, Copper, Brass, Bronze, Zinc, Lead etc.**
- **Types: Weldneck, Slipon, Blind, Socket Weld, Lap Joint, Spectacles, Ring Joint, Oriface, Long Weldneck, Deck Flange, RTJ, Flange, etc.**
- **Size: 1/2" NB TO 24" NB. Class: 150#, 300#, 400#, 600#, 900#, 1500# & 2500#.**

OUR PRODUCT RANGE



FASTENERS & NUT-BOLTS

OUR PRODUCT RANGE

Fasteners are mechanical components used to securely join or hold together two or more objects. Common types of fasteners include bolts, screws, nuts, washers, and rivets. They are essential in various industries such as construction, automotive, aerospace, and manufacturing.

- ***Stainless Steel: AISI 302, 304, 304L, 316, 316L, 310, 317, 321, 347, 410, 420, 904L, etc.***
- ***Alloy Steel: 4.6, 5.6, 6.6, 8.8, 10.9 & 12.9 'R', 'S', 'T' Conditions.***
- ***Carbon Steel: Bare Condition, Galvanized, Phosphatised, Cadmium Plated, Hot Deep Galvanized, Blackened, Nickel Chrome Plated, etc.***
- ***Non-Ferrous Metal: Copper, Brass, Aluminium, Titanium, Nichrome, Al-Bronze, Phosphorous Bronze, etc.***
- ***Types: Bolts, Nuts, Washer, Anchor, Fasteners, Stud Bolts, Eye Bolt, Stud, Threaded Rod, Cotter Pin, Socket, Screw, Fine Fasteners & Spares, Foundation Fasteners, etc***



BUTTWELD FITTINGS

Buttweld fittings are a type of pipe fitting used to join sections of piping by welding them together. These fittings provide a secure, leak-proof connection and are widely used in industries such as oil and gas, chemical processing, and power generation. They are available in various shapes like elbows, tees, reducers, and caps, allowing for changes in direction, pipe size, or branch connections within a piping system. Buttweld fittings are preferred for their durability, strength, and ability to withstand high pressures and temperatures. The welding process also ensures a seamless, smooth interior, reducing turbulence and potential corrosion points.

- ***Stainless-Steel: ASTM-A403
WP304/304L/304H/316/316L/317/317L/321/310/347/904L etc.***
- ***Carbon Steel: ASTM A234 WP /A420 WPL3/A420 WPL6/MSS-SP-75 WPHY
42/46/52/56/60/65/70***
- ***Alloy Steel: ASTM A234 WP1/WP5/WP9/WP11/WP22/WP91 etc.***
- ***Nickel Alloys: Monel, Nickel, Inconel, Hastalloy, Titanium, Tantalum, Bismuth,
Aluminium, High Speed Steel, Copper, Brass, Bronze, Zinc, Lead, 904L, Alloy 20, etc.***
- ***Duplex & Super Duplex Steel: UNS S31803, UNS S32750, UNS S32760, etc.***
- ***Types: Elbow, Tee, Reducer, Return Bends, Stub-Ends, Cap, Collar, Cross, Insert etc.***
- ***Size: 1/4" NB TO 32" NB. (Seamless & Welded) Wall Thickness: Sch. 5S to Sch. XXS***

OUR PRODUCT RANGE

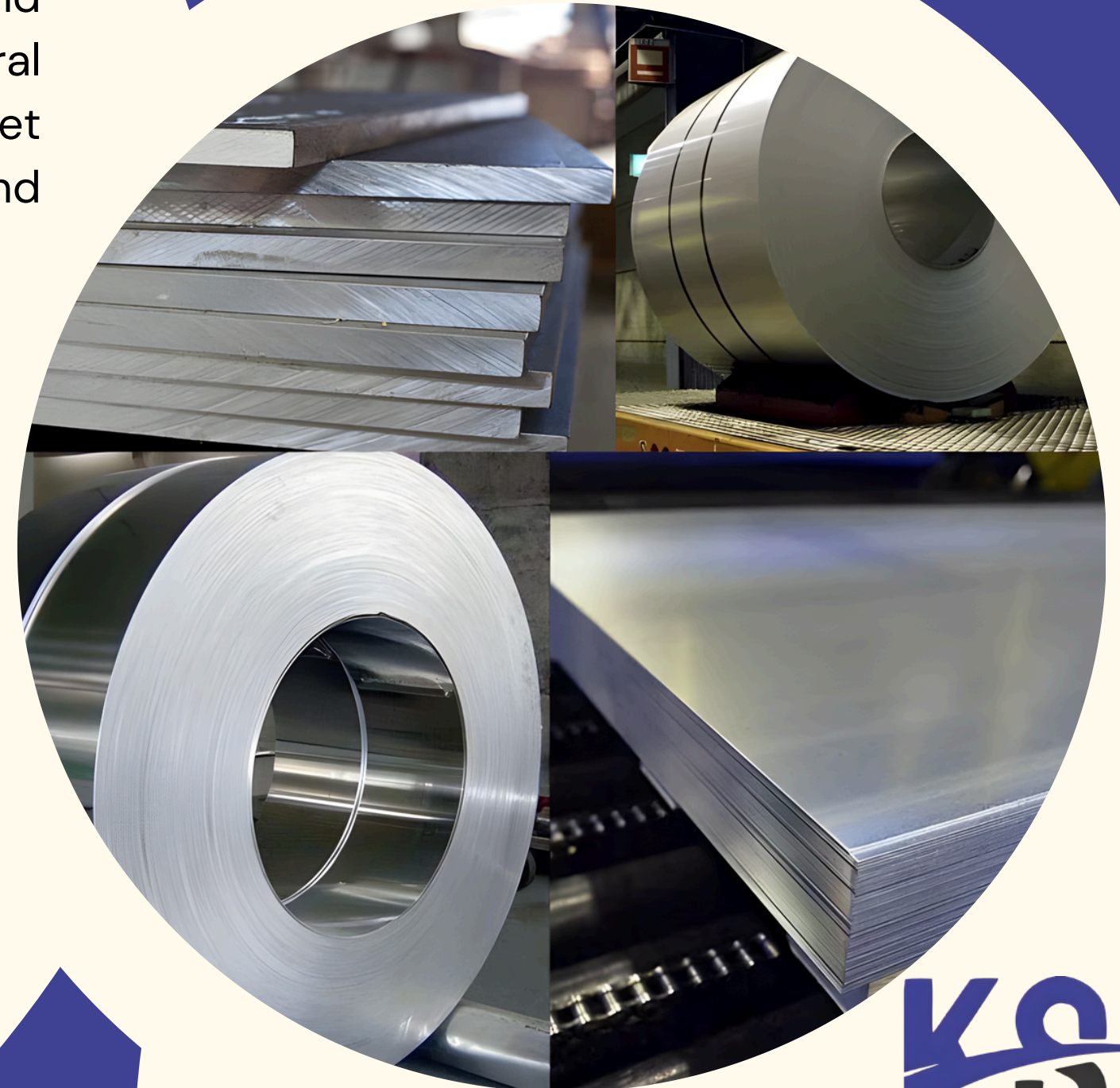


SHEET, PLATES & COIL

OUR PRODUCT RANGE

Sheet plate coils are flat-rolled metal products commonly made from materials like stainless steel, carbon steel, or aluminum. They are produced in large coils and can be unrolled, cut, or fabricated into various shapes and sizes depending on the application. Sheet plate coils are widely used in industries such as construction, automotive, aerospace, and manufacturing due to their versatility, strength, and corrosion resistance. They serve as raw materials for producing structural components, machinery parts, and even decorative items. The thickness of sheet plate coils can vary, with thin sheets often used for lightweight applications and thicker plates used for heavy-duty applications.

- ***Stainless Steel Coils, Sheets and Plates: ASTM A 240 Gr. TP 202, 304, 304L, 304H, 304LN, 309, 309S, 309H, 310S, 310H, 316, 316L, 316H, 316LN, 316Ti, 317, 317L, 321, 321H, 347, 347H, 348, 348H, 409, 410, 420, 430 etc.***
- ***Alloy Steel Plates: ASTM A 387 Gr. 2,5,9,11,12 & 22 in class 1 & 2, ASTM A 204 Gr. A & B, DIN 17175 Gr. 15 Mo3 & 16 Mo3 with IBR Test Certificate.***
- ***Carbon Steel / Boiler Quality Plates: IS 2062 Gr. A, B & C, IS 2002 Gr. 1 & 2, ASTM A516 Gr. 60 & 70, ASTM A515 Gr.70.***
- ***High Nickel Alloy: Monel, Nickel, Inconel, Hastalloy, Titanium, Tantalum, Bismuth, Aluminium, High Speed Steel, Copper, Brass, Bronze, Zinc, Lead etc.***
- ***Duplex & Super Duplex Steel: UNS S31803, UNS S32750, UNS S32760, etc. Types: Sheet, Plates, Strips, Etc.***



ROD

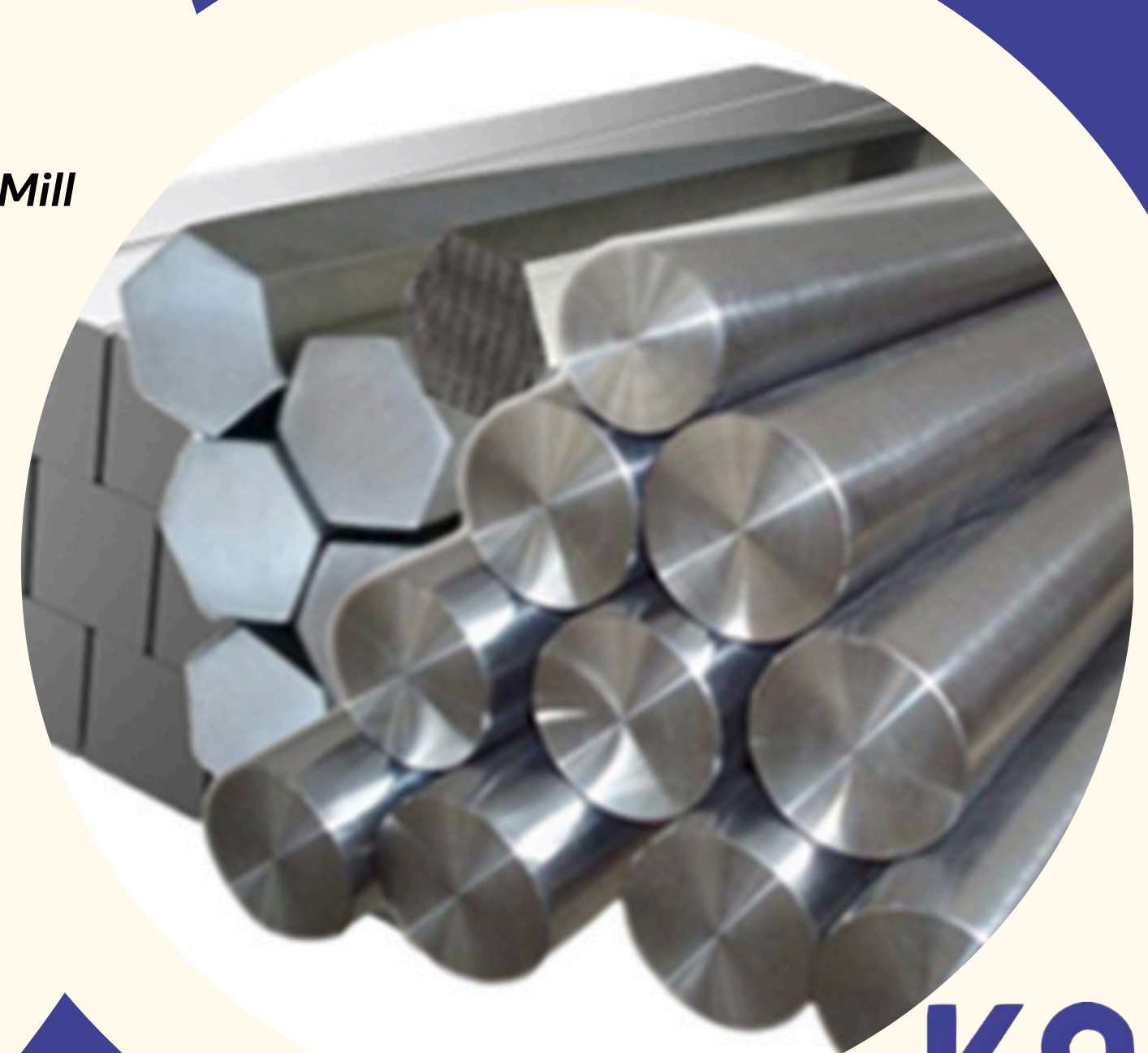
Round-Square-Hexa Bars

OUR PRODUCT RANGE

- ***Stainless Steel: ASTM A276 & A479 Grade 202/ 304/ 304L/ 316/ 316L/ 316Ti/ 317/ 317L/ 321/ 310/ 347/ 410/ 416/ 420/ 430/ 440C/ 904/ 303/ 17-4PH, 15-5PH, etc.***
- ***Nickel Alloys: Monel, Inconel, Hastelloy, Nickel, Titanium, Alloy 20, etc.***
- ***Duplex & Super Duplex: UNS 32205, 31803, 32750, 32760, etc. Types: Round, Square, Hexagon, Circles & Blanks. Size: 3mm – 75mm dia. ready stock with Mill Test Certificate.***
- ***Process: Cold Drawn, Annealed, Export Bright & Black.***
- ***Tolerance: H9, H11***

Our valued clients can avail from us sturdily constructed Stainless Steel Bars and Rods. These Stainless Steel Bars and Rods ensure certain characteristics including high compressive strength, ability to withstand pressure and sturdiness. Along with this, Stainless Steel Bars and Rods are acknowledged for their precision designing and fine finish.

- **Grade :** TP 304, 304L, 304H, 309S, 309H, 310S, 310H, 316, 316H, 316L, 316 Ti, 317, 321, 321H, 347, 347 H, 410, 410, 420, 430, 431 447 & 444



DAIRY FITTINGS

OUR PRODUCT RANGE

Dairy fittings are specialized components used in the dairy industry to connect, control, and direct the flow of liquids like milk and other dairy products. These fittings are typically made from stainless steel, ensuring durability, corrosion resistance, and hygienic standards suitable for food processing. They include items like valves, clamps, elbows, tees, and adapters, designed to meet strict sanitary requirements. Dairy fittings are crucial for maintaining the cleanliness of processing systems, preventing contamination, and ensuring product safety.

- ***Stainless Steel: AISI 304, 304L, 316, 316L, 310, 317, 317L, 321, 347, 904L, etc.***
- ***Carbon Steel: A105, A216, Gr. WCB, Cadmium Plated, Nickel, Chrome Plated, etc.***
- ***Non-Ferrous Metal: Copper, Brass, Titanium, Phosphorous Bronze, etc.***
- ***Types: Nipple, Dairy Fittings, Union, S.M.S., I.D.F., Dairy Valve, Butterfly Valve, Ball Valve, Needle Valve, N.R.V. Valve, Foot Valve, Safety Valve, Cock Valve, Syphon Tube, etc.***



FERRULE FITTINGS

OUR PRODUCT RANGE

Ferrule fittings are mechanical components used in piping and tubing systems to create secure, leak-proof connections, especially in high-pressure and high-temperature environments. They consist of a nut, a body, and one or more ferrules (rings). When the nut is tightened, the ferrule compresses around the tubing, forming a tight seal between the fitting and the tube.

- ***Stainless Steel: ASTM A182 F304/304L/304H/316/316L/317/317L/321/310/347/904L etc.***
- ***Carbon Steel: ASTM A105/A694/F42/46/52/56/60/65/70/A350 LF3/A350 LF2, etc.***
- ***Alloy Steel: ASTM A182 F1/F5/F9/F11/F22/F91 etc.***
- ***Duplex & Super Duplex Steel: UNS S31803, UNS S32750, UNS S32760, 904L, Alloy 20, etc.***
- ***Other Alloys: Stainless Steel, Nickel Alloys, Carbon Steel, Alloy Steel, Monel, Nickel, Inconel, Hastalloy, Titanium, Tantalum, Bismuth, Aluminium, High Speed Steel, Copper, Brass, Bronze, Zinc, Lead etc.***
- ***Types: Nipples, Adaptors, Crosses, Union Ball Joints, Reducing Bushing, Reducers, Pipe Caps, Couplings, Pipe Plug, Hollow Hex Plug, Elbow, Reducing Union, 90 Deg. Union Elbow, Union Tee, Female Connector, Male Connector, Manifold Tee, Locator Union, Extended Run Leg Union Tee, Reducing Tee, Tribow, ATW Weld Ring, Tube Socket Weld To Pipe Butt Weld, Tube Butt Weld To Tube Socket Weld, Port Connector, Etc.***



VALVES

OUR PRODUCT RANGE

Valves are mechanical devices used to control the flow and pressure of fluids (liquids, gases, and slurries) within a system. They operate by opening, closing, or partially obstructing passageways to regulate flow, pressure, or direction. Valves come in various types, such as ball valves, gate valves, globe valves, butterfly valves, and check valves, each suited for specific applications depending on the system's requirements. Commonly used in industries like water supply, oil and gas, chemical processing, and manufacturing, valves ensure the safe and efficient operation of fluid systems by preventing leaks, maintaining pressure, and facilitating flow control.

- ***Stainless Steel: AISI 304, 304L, 316, 316L, 310, 317, 317L, 321, 347, 904L, etc.***
- ***Carbon Steel: A105, A216, Gr. WCB, Cadmium Plated, Nickel, Chrome Plated, etc.***
- ***Non-Ferrous Metal: Copper, Brass, Titanium, Phosphorous Bronze, etc.***
- ***Types: Ball Valve, Gate Valve, Check Valve, Needle Valve, Mini Valve, Gauge Rott Valve, Globe Valve, Manifolds (2-way, 3-Way, 5-Way)***



FORGED SCREW

OUR PRODUCT RANGE

Forged screw fittings are robust components used in piping systems to connect pipes, valves, and other equipment. They are made from forging, a process that involves shaping metal using compressive forces, resulting in stronger and more durable fittings than those produced by casting. Due to their strength and resistance to high pressure and temperature, forged screw fittings are commonly used in industries such as oil and gas, chemical processing, and power generation. They are available in various types, such as elbows, tees, and couplings, and are typically threaded for easy assembly without welding.

- ***Stainless Steel: ASTM A182 F304/304L/304H/316/316L/317/317L/321/310/347/904L etc.***
- ***Carbon-Steel: ASTM A105/A694 F42/46/52/56/60/65/70/A350 LF3/A350Lf2 etc.***
- ***Alloy Steel: ASTM A182 F1/F5/F9/F11/F22/F91 etc.***
- ***Other Alloys: Monel, Nickel, Inconel, Hastalloy, Titanium, Tantalum, Bismuth, Aluminium, High Speed Steel, Copper, Brass, Bronze, Zinc, Lead etc.***
- ***Types: Elbow, Tee, Union, Cross, CoupBushing, Plug, Swage Nipple, Welding Boss, Hexagon Nipple, Barrel Nipple, Welding Nipple, Parraler Nipple, Street Elbow, Hexagon Nut, Hose Nipple, Bend, Adapter, Insert, Weldolet, Elbowlet, Sockolet, Thredolet, Nipolet, Letrolet, etc.***
- ***Size: 1/4" NB TO 4" NB. (Socketweld & Threaded) Class: 3000#, 6000#, 9000#.***



KAMLESH STEEL INDIA



+91-7977245583



sales@kamleshsteels.com



www.kamleshsteels.com



Pap J-77, Near Swami Samarth
Weigh Bridge, Indrayani Nagar
MIDC Bhosari, Pune-411026
INDIA



Thank's For Knowing About us